

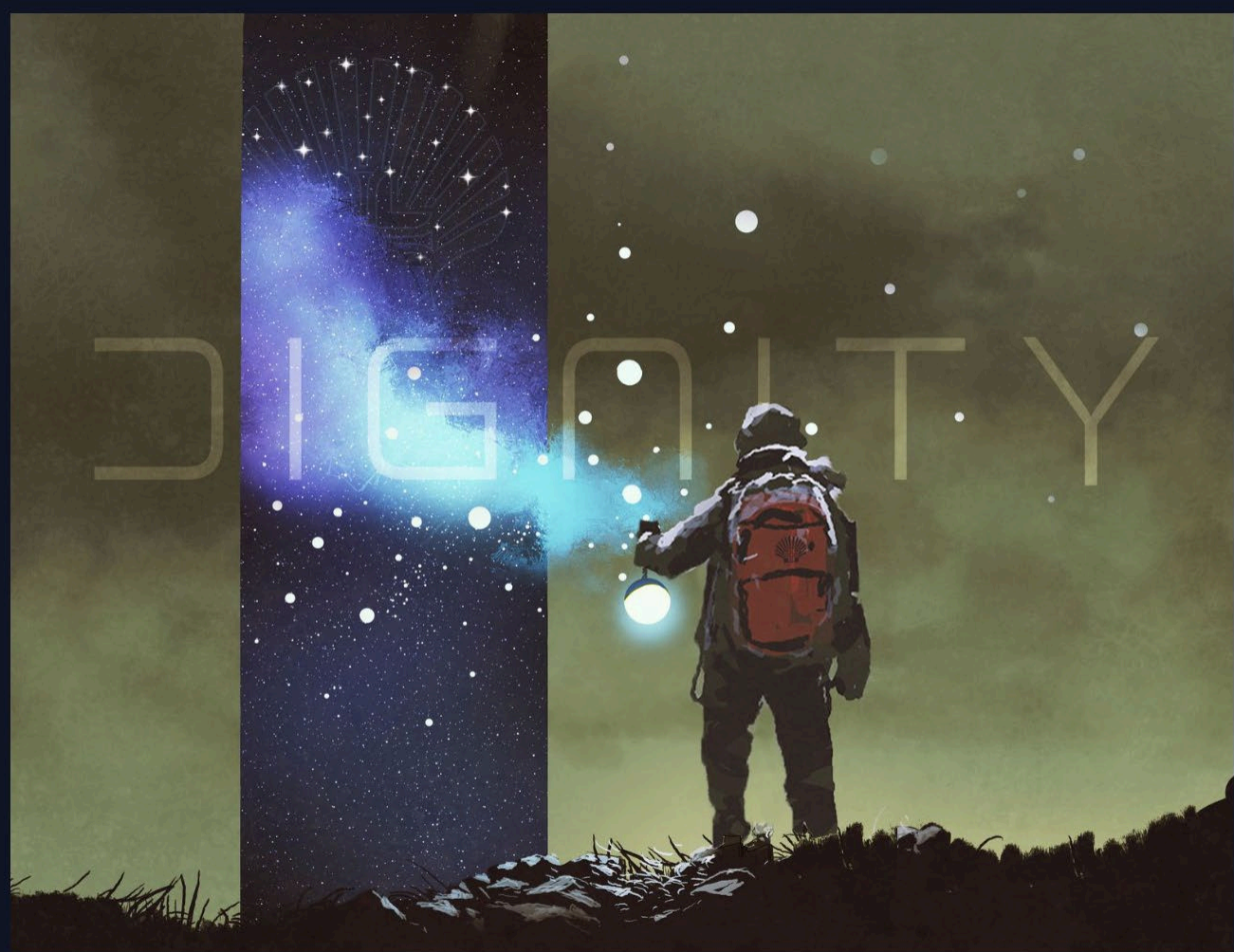


DIGNITY



Mission Leadership Academy

Dignity



MISSION LEADERSHIP ACADEMY

Welcome

Martin Schreiber





Friday, March 15, 2024

Dignity

REFLECTIVE INTEGRATION

— BREAK —

WELCOME

Martin Schreiber

REFLECTION & SHARED EXPERIENCE

Dougal Hewitt

FOUNDING STORY

Sr. Susanne Hartung, SP

LOCAL LEADERSHIP STORY

Cassie Mogg

ESTABLISHING CONNECTIONS

Dougal Hewitt

CONNECTION

Mary Lyons

Martin Schreiber

CLOSING

Martin Schreiber

— BREAK —

REFLECTIVE INTEGRATION

— LUNCH —

MISSION LEADERSHIP ACADEMY

Reflection

Dougal Hewitt



Sensory Experience

Touch



March 19

FEAST OF ST. JOSEPH





The Dignity of Work & Whole Person Caring





As we go marching, marching,
in the beauty of the day,
A million darkened kitchens,
a thousand mill lofts gray,
Are touched with all the radiance
that a sudden sun discloses,
For the people hear us singing:
Bread and Roses!
Bread and Roses!

Our lives shall not be sweated
from birth until life closes;
Hearts starve as well as bodies;
bread and roses,
bread and roses.

Sensory Experience

Touch



Describe your pod's sensory experience.

What was the highlight of the experience?

Share a word or phrase that summarizes your experience.

Anchorage, AK

Juliana Belden



Olympia, WA

Haley Nolan



Spokane, WA

Shaina Schroeder



Los Angeles, CA

Lizette Cuvin



Orange Blossoms, CA

Ivonne Joseph





Pioneering
Women



Table of the King

The Table of the King honors the legacy, the dedication, and the life of Blessed Emilie Gamelin, the Foundress of the Sisters of Providence.

She experienced pain and loss in her own life, yet her grief took her outward where she found comfort in caring for others. Her home became a refuge for those who society considered outcasts, where she offered meals at her own dining room table. She called her ministry the "Table of the King." Her care went beyond breaking bread together; she saw the inherent dignity of every person.

Blessed Emilie's compassionate service is the foundation of who we are today, beginning the ministry that would become Providence St. Joseph Health.



PRAYER FOR TABLE OF THE KING

Our Provident God, We ask you to bless this food as we are reminded of those who do not have nourishment to sustain healthy lives. As we gather, let us have grateful hearts for all that has been provided us. We ask that in being inspired by the life of Blessed Emilie Gamelin, we too may have hearts of service to those who are poor and vulnerable. Amen.

NICU NOURISHMENT ROOM

MISSION LEADERSHIP ACADEMY

Founding Story

Sr. Susanne Hartung, SP

Blessed Émilie Gamelin



MISSION LEADERSHIP ACADEMY

Local Leader

Cassie Mogg



MISSION LEADERSHIP ACADEMY

Providence Culture

Dougal Hewitt





fighting **YOURSELF**

2

How are you working against yourself?

Sometimes the person holding you back is *you*. There are many ways to work against yourself—not investing resources in what matters, missing opportunities because of fear or doubt, stifling possibility by over-controlling, resisting change, clinging to a limiting worldview, and doing things counter to your intentions. When we struggle, it's easy to blame what's *outside us* when the issue is *inside us*.



MISSION LEADERSHIP ACADEMY

Connection

Mary Lyons

Martin Schreiber





Dignity

Demonstrate understanding of human dignity as articulated in Catholic tradition and teaching and centrality of human dignity to the healing mission of Jesus in Catholic healthcare.

Describe the contextual history, influence, and integration of human dignity within social, economic, technological, political realms.

Articulate the responsibility for and identify opportunities to embrace human dignity in health care practice.

Apply course concepts to personal leadership development with specific connection to Mission-centered leadership and service to vulnerable populations.



E-portfolio Update

E-PORTFOLIO SUBMISSION REQUIRED:

- Participants in the 12-credit University of Providence certificate.
- Participants in the Discerning Mission Leader program.

INVITATION TO CONTINUE CREATING E-PORTFOLIO

- All other participants (no submission required).



VULNERABLE





Bon Voyage

BACK TO YOUR LOCAL POD.

