



VULNERABLE



Mission Leadership Academy

Vulnerable



MISSION LEADERSHIP ACADEMY

Welcome

Martin Schreiber





Friday, May 17, 2024

Vulnerable

REFLECTIVE INTEGRATION

— BREAK —

WELCOME

Martin Schreiber

REFLECTION & SHARED EXPERIENCE

Dougal Hewitt

FOUNDING STORY

Sr. Maggie Pastro, SP

LOCAL LEADERSHIP STORY

Scott Marsal, MD

ESTABLISHING CONNECTIONS

Dougal Hewitt

CONNECTION

Mary Lyons

Martin Schreiber

CLOSING

Martin Schreiber

— BREAK —

REFLECTIVE INTEGRATION

— LUNCH & ADJOURN —

MISSION LEADERSHIP ACADEMY

Reflection

Dougal Hewitt

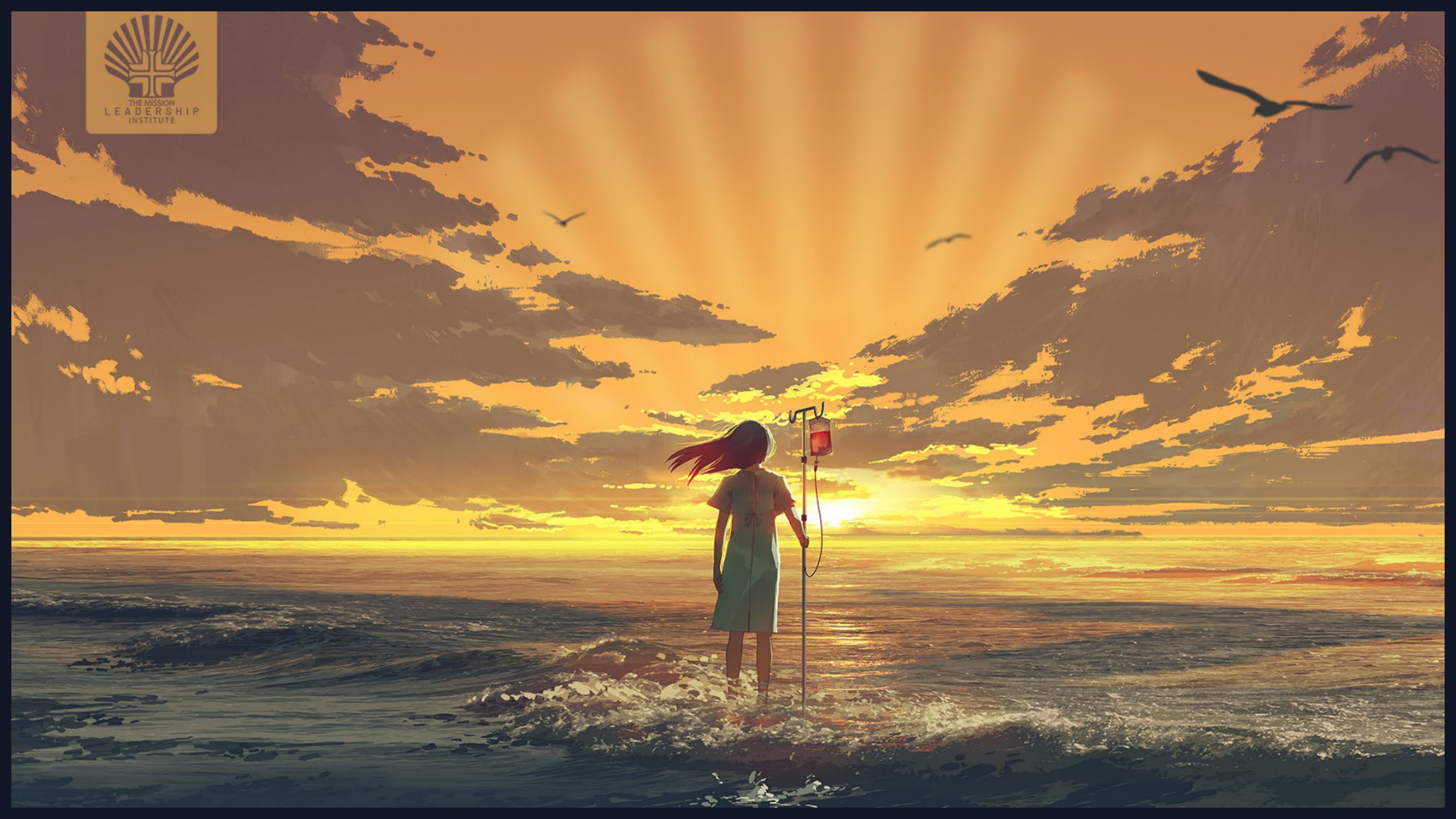


The Parable of the Good Samaritan



“Those who are most wounded, oppressed and even crushed, are the poor ... by focusing on those persons who are poor the Church asks us not to turn aside, not to be afraid to take a close look at the suffering of those most vulnerable.”

How do our **senses** help us
experience the world around us?





HEARING

You hear the sounds of the waves crashing,
And the seagulls squaking in the distance.



SMELL

You smell the salt from through the oceans gentle breeze,
And the sunscreen from those protected from the sun.



VISION

You see the boats sailing in the distance,
And the never-ending horizon.



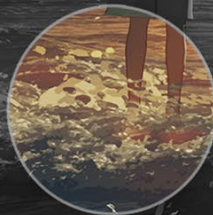
TASTE

You taste the salt as you emerge from the water,
And the ice cream as you relish the taste of Summer.



TOUCH

You feel the cold waves crash against your legs,
And the sand between your toes.



May the touch of your skin
Register the beauty
Of the otherness
That surrounds you.

May your listening be attuned
To the deeper silence
Where sound is honed
To bring distance home.


May the fragrance
Of a breathing meadow
Refresh your heart
And remind you, you are
A child of the earth.

And when you partake
Of food and drink,
May your taste quicken
To the gift and sweetness
That flows from the earth.

May your inner eye
See through the surfaces
And glean the real presence
Of everything that meets you.

May your soul beautify
The desire of your eyes
That you might glimpse
The infinity that hides
In the simple sights
That seem worn
To your usual eyes.



A watercolor background with a central blue and green wash. The word "PROVIDENCE" is written in white, stylized, hand-drawn capital letters across the center. The colors transition from yellow and orange at the top and bottom to a mix of blue and green in the middle.

PROVIDENCE

Sensory Experience

Sight



Describe your pod's sensory experience.

What was the highlight of the experience?

Share a word or phrase that summarizes your experience.

Seattle, WA

Dolan Newell



Eureka, CA

Christie Duray



Sonoma, CA

Crystal Avina



Orange Buds, CA

Garrett Hayes



Missoula, MT

Angela Emery





VULNERABLE



MISSION LEADERSHIP ACADEMY

Founding Story

Sr. Maggie Pastro, SP

Mother Bernarda Morin



MISSION LEADERSHIP ACADEMY

Local Leader

Scott Marsal, M.D.



MISSION LEADERSHIP ACADEMY

Providence Culture

Establishing Connections

Dougal Hewitt



GIFTS *and* GLITCHES

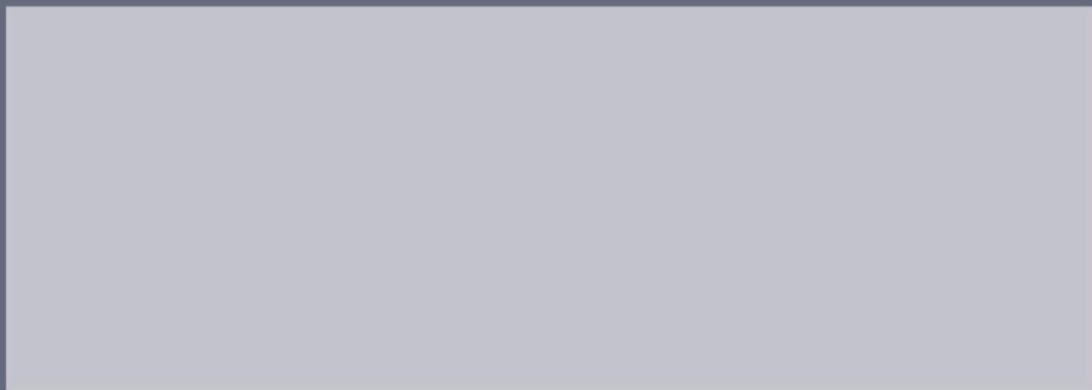


A vertical panel on the left side of the page. It features a large, white, stylized number '3' in the upper left quadrant. The background is a light beige color with a pattern of thin, dark, diagonal lines. On the right side of this panel, there is a large, dark blue semi-circle representing a sun or moon. Below the semi-circle, there are several layers of dark brown and black shapes representing clouds or land. The overall style is minimalist and modern.

3

What's a glitch you have that could just as easily be expressing as a gift?

The fundamental patterns in people are neither intrinsically good nor bad—but they may show up in either enabling or disabling ways. A glitch is one of these patterns currently showing up in an unhelpful way. So, it's essential to step toward our glitches—not away. To understand their nature. To embrace them. And unleash their potential to become our greatest gifts.

A large, empty, light gray rectangular box, likely intended for a user to write their answer to the question above. It occupies the lower half of the right side of the page.





Where is light
entering our
lives?



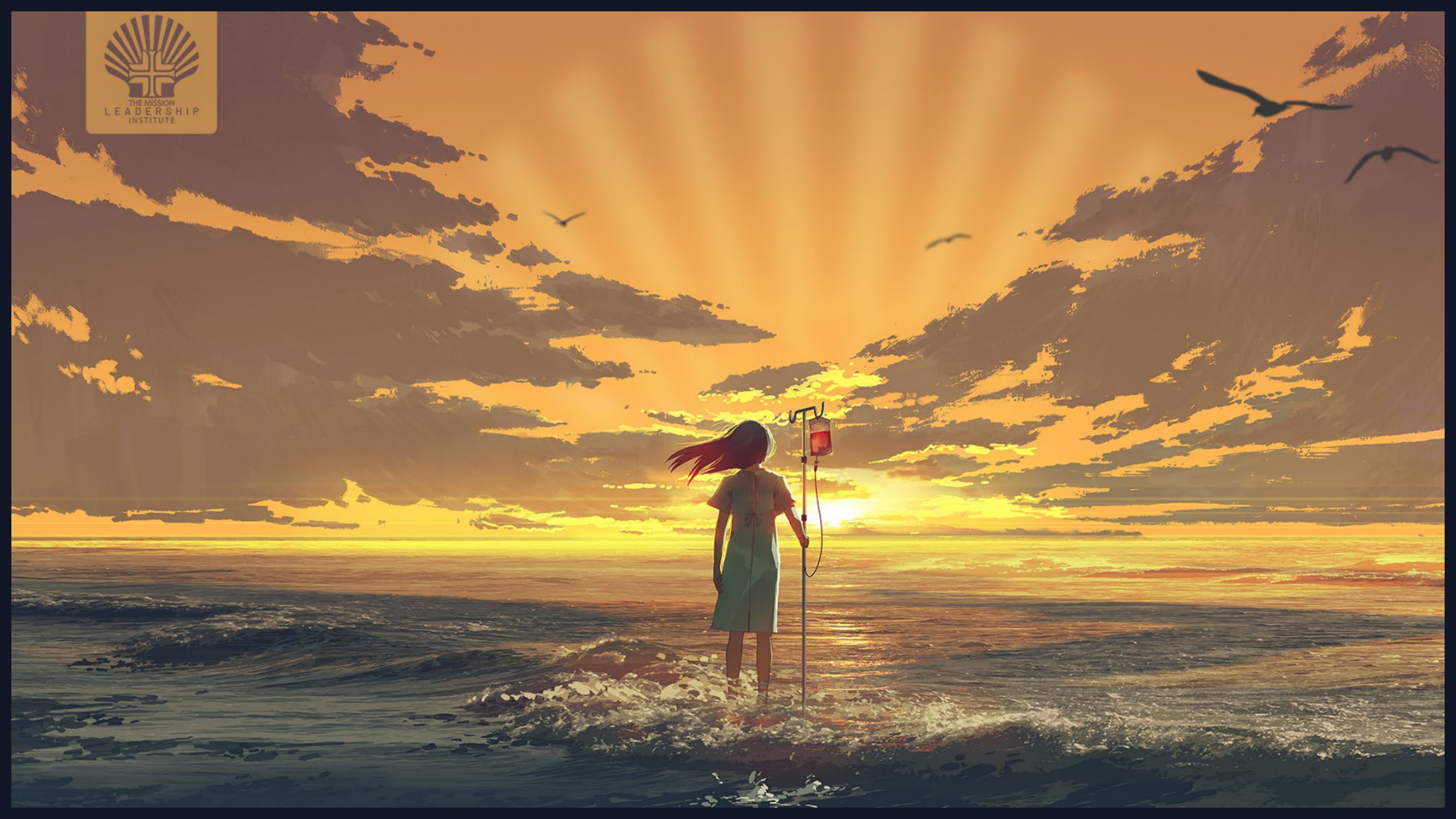
Watch where
you tread.





Seeing Anew

We give thanks as we gather today
For arriving safely in this new dawn,
For the gift of eyes
To see the world,
The gift of sight
To feel at home
In our lives,
For the waves of possibility
Breaking on the shore of this new dawn,
The harvest of the past
That awaits our hunger,
And all the furtherings
This new day will bring.



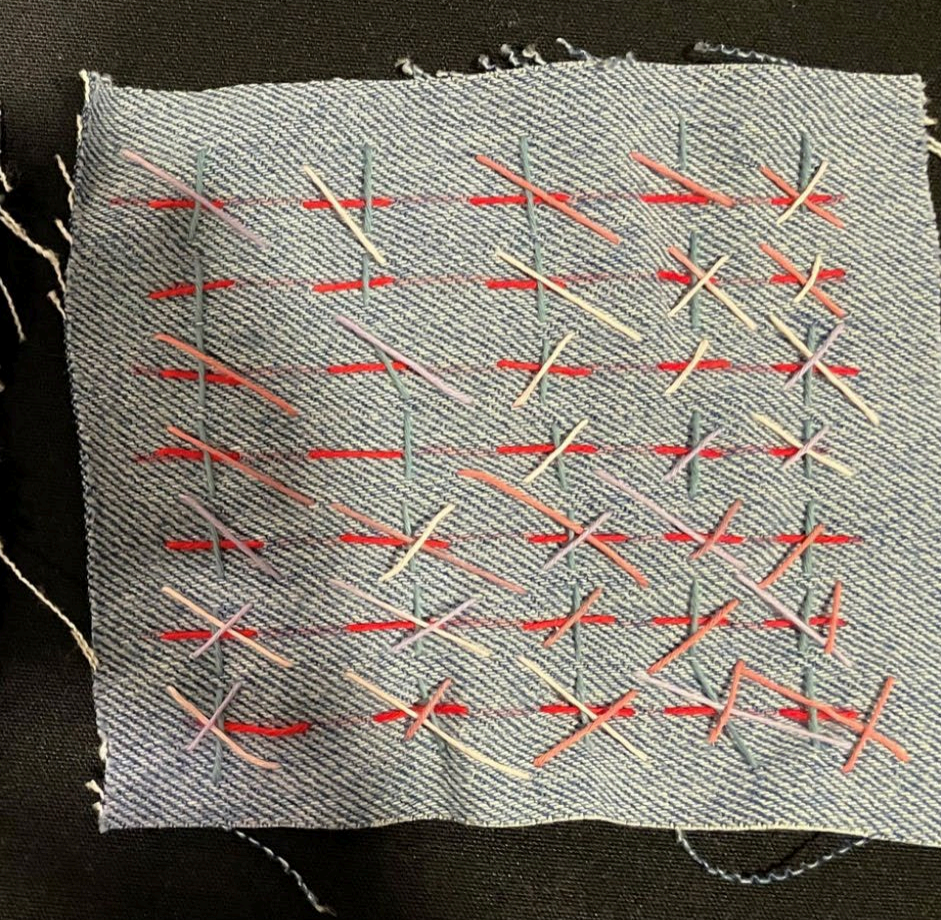
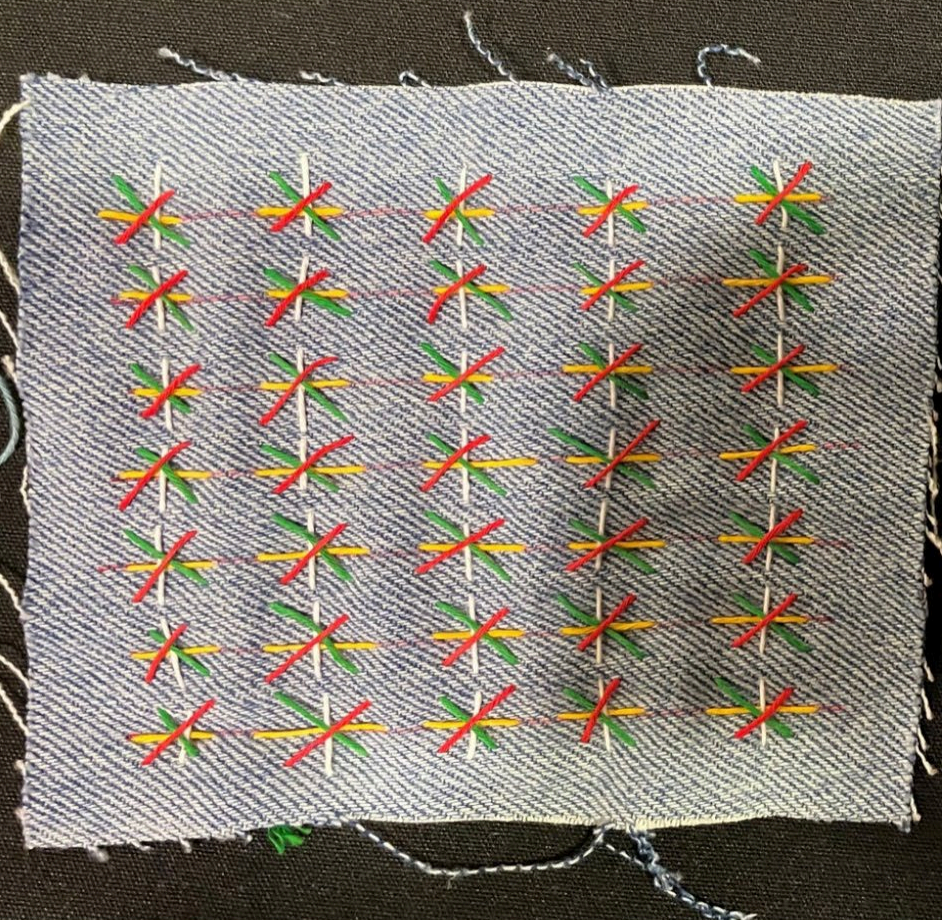
MISSION LEADERSHIP ACADEMY

Connection

Mary Lyons

Martin Schreiber







Vulnerable

Can I articulate the privileging of those who are poor and vulnerable within our healing services?

Do I understand the connection of our healing service, particularly for those who are poor and vulnerable, to the Catholic Social Teaching?

Can I lead in a Mission-centered way that provides advocacy and empowerment to vulnerable populations?



COMMON GOOD





"Our goal should be to live life in radical amazement ... get up in the morning and look at the world in a way that takes nothing for granted. Everything is phenomenal; everything is incredible; never treat life casually. To be spiritual is to be amazed."

ABRAHAM JOSHUA HESCHEL



Bon Voyage

BACK TO YOUR LOCAL POD.





MISSION
LEADERSHIP
INSTITUTE

